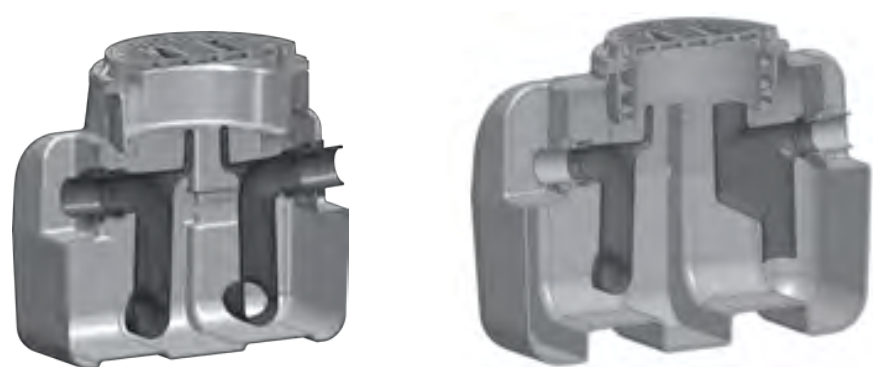


T&C XL Series

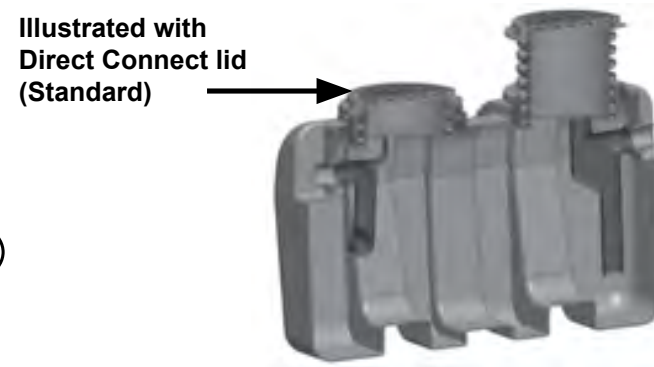
50, 75 and 100 GPM HDPE Grease Interceptors

Specification: Town & Country Plastics XL Series hydro mechanical grease interceptor with flow rating of ___ GPM and grease holding capacity of _____. Interceptor has a limited lifetime warranty and is made in the USA out of seamless, rotationally molded High Density Polyethylene with 3/8" uniform wall thickness. Interceptor is designed for above or below ground installation and includes extension pipe gasket for ADS 18N12 (pipe not included) for the adjustable lid system, sample port access, internal baffle, deep seal trap covered by lid, internal flow control set to ___ GPM and 4" no hub inlet and outlet connections. Ductile iron pickable lids, H-20 rated, proof-load tested to 40,000 lbs. provide a water / gas tight seal. The lids are designed in accordance with the loading requirements of AASHTO H-20. Note that the interceptor is tested and certified to the ASME A112.14.3 Standard (Type D), CSA B481 and listed with I.A.P.M.O. For indoor / outdoor use. The -PDI model is tested and certified to the PDI G-101 Standard.

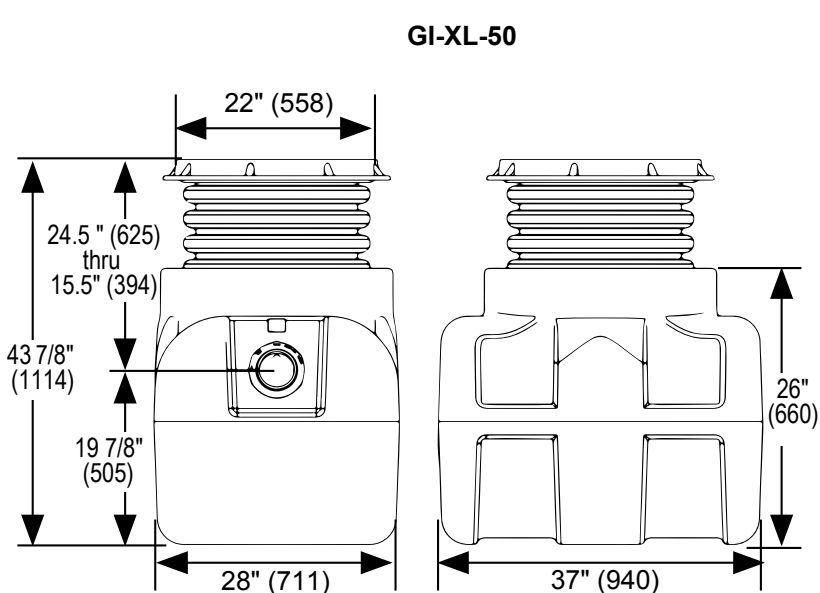
Function: Used in restaurants, kitchens, institutional and industrial facilities such as food processing and packaging plants and other types of food processing areas where fat, oil and grease (FOG) drains with the waste water. Typically installed either on or into the floor. Narrow width permits access through doorways and down stairwells. High Density Polyethylene construction ensures a lightweight installation process (two people can move and install it). Regular maintenance is required to keep the interceptor functioning. All XL interceptors can withstand a temperature of up to and including 180 degrees Fahrenheit.



U.S. Patent
9,551,142



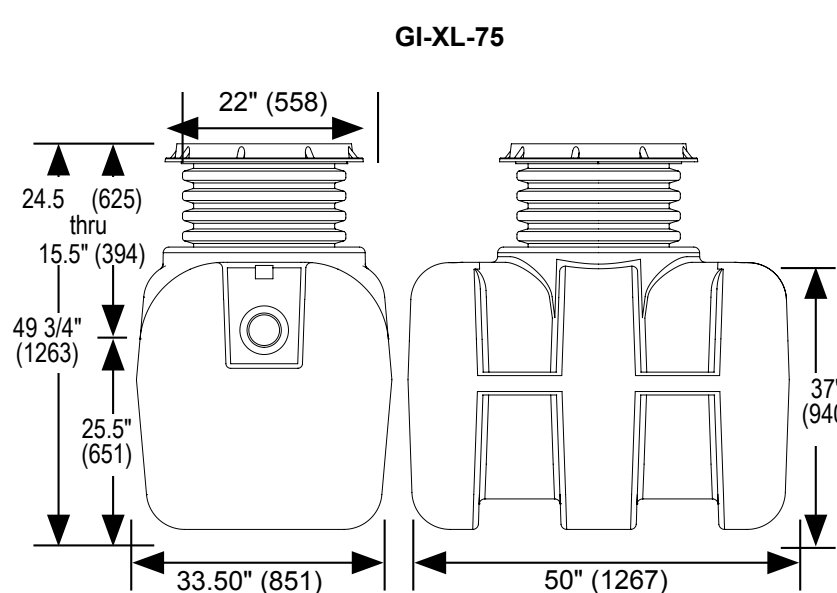
PDI approved when shipped with an external, vented low control fitting



GI-XL-50 Capacities:

- Liquid: 55 gal.(7.19 cu.ft.)
- Grease: 493.4 lbs. (67.2 gal.) @50GPM (Type D)
- Grease: 310.6 lbs. (42.3gal.) @75GPM (Type D)
- Solids: 27 gal.

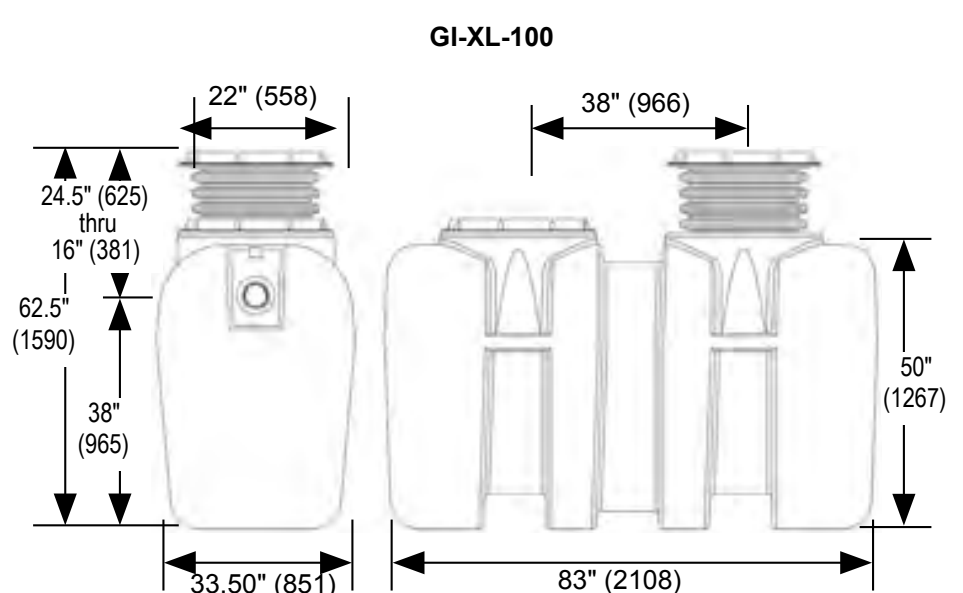
Shipping weight 92 Lbs.



GI-XL-75 Capacities:

- Liquid: 140 gal.(18.6 cu.ft.);
- Grease: 564 lbs. (37.7 gal.) @50GPM (Type D)
- Grease: 838 lbs. (114.1 gal.) @75GPM (Type D)
- Solids: 63 gal.

Shipping weight 150 Lbs.



GI-XL-100 Capacities:

- Liquid: 300 gal.(40 cu.ft.)
- Grease: 1812 lbs. (246.7 gal.) @75GPM (Type D)
- Grease: 2,016 lbs. (274.5 gal.) @100GPM (Type D) (Type C)
- Grease: 1,515 lbs. (206.3 gal) @ 200GPM (Type D)
- Solids: 135 gal.

Shipping weight 275 Lbs.

XL models only meet PDI Standards when installed with an external, vented flow control fitting.

OPTIONAL VARIATIONS	PART NO.
Anchor kit for XL Series	XL-AK
Lid Extension - up to 44" high - for XL Series	XL-EXT-44
Lid Extension - up to 72" high - for XL Series	XL-EXT-72
6" no hub inlet and outlet - for each piece (two pieces required)	XL-F6
High level alarm and float switch (to be installed on site)	XL-HLA
Remote pump out kit (also includes Remote Pump Out (-RPO))	XL-RPOK
3" Remote pump outlet connections on top of interceptor - specify location and number required	XL-RPO
Sediment bucket - for XL-50	SB-50
Sediment bucket - for XL-75	SB-75
Sediment bucket - for XL-100	SB-100
External sampling port - inline, high connections	XL-SP-H
External sampling port - inline, low connections	XL-SP-L
External sampling port - offset	XL-SP-OF

NOTES:

1. 4" No Hub inlet and outlet.
2. Operating temperature: 150° F.
3. Do not use for pressure applications.
4. Cover placement allows full access to tank for proper maintenance.
4. Vent required per local code.
6. Engineered inlet and outlet diffusers with inspection ports are removable to inspect/clean piping.
7. Designed for below-grade, above-grade, indoor or outdoor installations.
8. Meets PDI G-101 Standard when installed with external, vented flow control fitting.

UNLESS STATED OTHERWISE DIMENSIONS ARE IN INCHES	MATERIAL: HDPE		TITLE: XL SERIES GREASE INTERCEPTORS		SERIES: XL SERIES	REV:	 WWW.TANDCPLASTICS.COM 732-780-5300
	WEIGHT [lb]:		NAME	DATE	SHEET 1 OF 1	SIZE:	
	DO NOT SCALE DRAWING		DRAWN	CHECKED	SCALE: 1:2		